

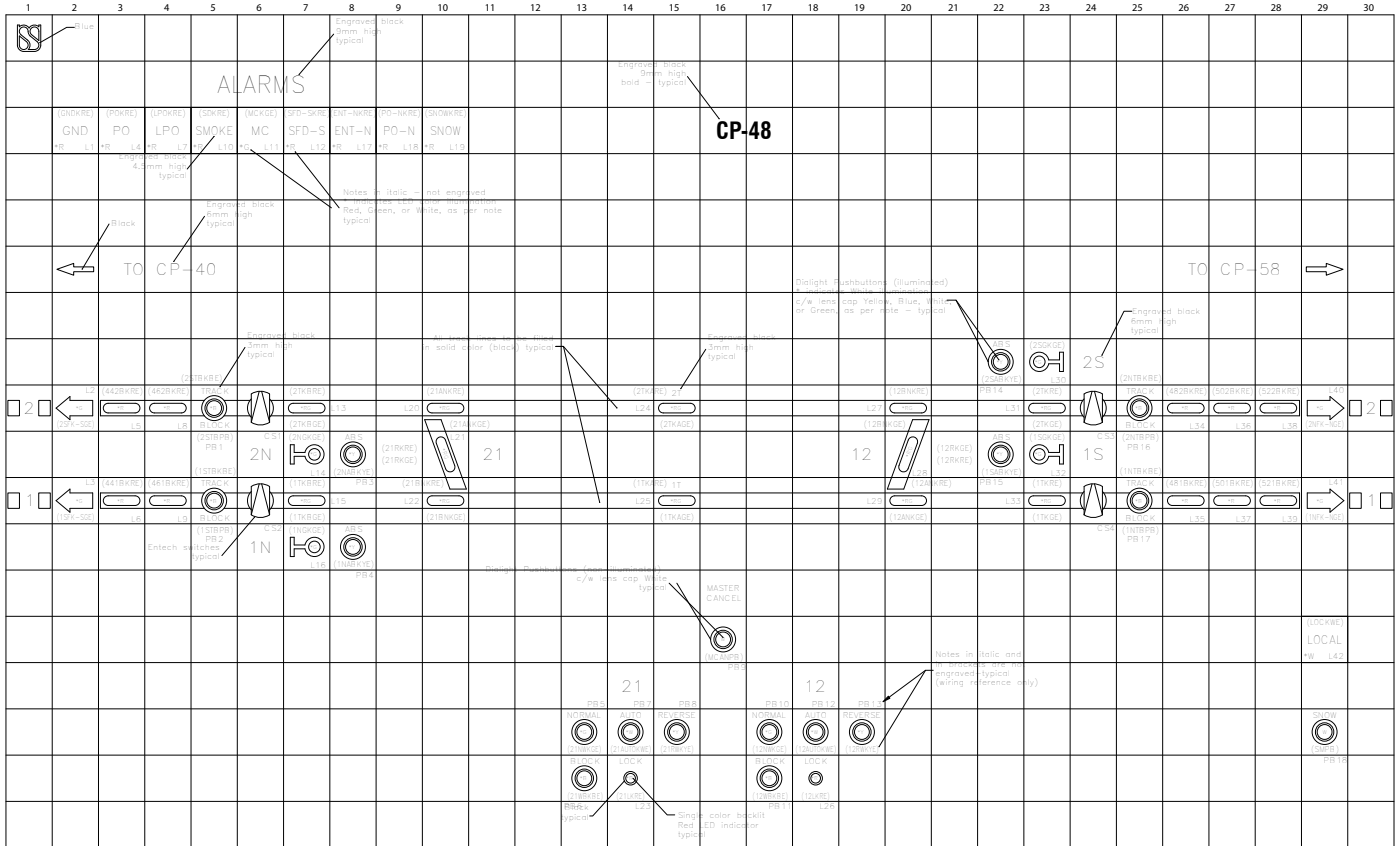
- 1- Quantity: 1 enclosure.
- 2- Tolerance: ± 2mm.
- 3- Construction of enclosure with 11 gauge [3.04mm] C.R.S.
- 4- Construction of door with 14 gauge [1.897mm] C.R.S.
- 5- All dimensions are in mm and [inches].
- 6- Front access door will be fully gasketed, equipped with recessed cup handle, 3 way latch system and one cam lock keyed with a Chicago lock company keyway lock No.2382.
- 7- Top access opening shall be equipped with lift and turn flush-mount latches and one cam lock keyed with a Chicago lock company keyway lock No.2382 and a door stopper to hold the door at 55° when opened. All access doors shall be fully gasketed.
- 8- All hinges shall be of concealed type. Cabinet shall be reinforced with 1" 1/2 x 1" 1/2 x 3/16 steel s/strip.
- 10- Prior to painting, the enclosure shall be thoroughly cleaned, free from rust, burrs, grease and moisture.
- 11- 2 coats for rust inhibiting paint shall be applied to finish paint.
- 12- Interior finish paint to be white.
- 13- Exterior finish paint to be ANSI #1 Gray, matte.
- 14- All hardware and hinges shall be corrosion protected.

Customer:		SACO CONTROLS INC.					Initiated By:	Sam Larizza	
Project #:	P1-00-10	BILL OF MATERIALS					Initial Date:	Mar. 13, 2000	
P.O. #:	T99B02T3	Project:					Page:	1 of 2	
Document #:	CP-36BOM.doc	Note:	CP36 Local Control Panel	Rev#:	3	By:	T.R.	Rev. Date:	May 26, 2000

ITEM	DEVICE	DESCRIPTION	PART NUMBER/TYPE	QTY.	MFG/ SUPPLIER	REMARKS
		1/ Mosaic Hardware				
1		Frame Housing Cabinet per drawing	See SACO Dwg. No.: P1-00-10/FHC1	1	BATTLER	
2		SP-300-2 aluminium front profile	SP-300-2	2688	SACO	
3		SP-700 aluminium support profile 24x48mm	SP-700	1152	SACO	
4		SM 24 288mm x 288mm grid profile	SG-2412	6	SACO	
5		Grid profile fastening set	SF-01A	18	SACO	
6		Junction screw set	SJS-24	13	SACO	
7		24mm x 24mm tile, light gray	ST-2424-GR	736	SACO	
8		24mm x 24mm tile, white translucent	ST-2424-WT	32	SACO	
9		Mounting Bracket – front profile attachment	SPB-02	4	SACO	
		2/ LED Indicators				
10		Single color backlit Red LED indicator @24VDC	SE900-01-2424-1C-R-024-CC-NT-TB	18	SACO	
11		Single color backlit Green LED indicator @24VDC	SE900-01-2424-1C-G-024-CC-NT-TB	7	SACO	
12		Single color backlit White LED indicator @24VDC	SE900-01-2424-1C-W-024-CC-NT-TB	1	SACO	
13		Dual color backlit Red/Green LED indicator @24VDC	SE900-01-2424-2C-RG-024-CC-NT-TB	6	SACO	
		3/ Pushbuttons and Switches				
14		Momentary illuminated pushbutton, 922 series, with Yellow lens	922-1524-525 + 908-1633	4	DIALIGHT	
		White LED @24VDC , type T-1 ¾ midget flange based	FF200CW600-24V-P	4	LEDTRONICS	
15		Momentary illuminated pushbutton, 922 series, with Blue lens	922-1524-525 + 908-1634	4	DIALIGHT	
		White LED @24VDC , type T-1 ¾ midget flange based	FF200CW600-24V-P	4	LEDTRONICS	
16		Momentary illuminated pushbutton, 922 series, with Green lens	922-1524-525 + 908-1632	1	DIALIGHT	
		White LED @24VDC , type T-1 ¾ midget flange based	FF200CW600-24V-P	1	LEDTRONICS	

Customer:		SACO CONTROLS INC.					Initiated By:	Sam Larizza	
Project #:	P1-00-10	BILL OF MATERIALS					Initial Date:	Mar. 13, 2000	
P.O. #:	T99B02T3	Project:					Page:	2 of 2	
Document #:	CP-36BOM.doc	Note:	CP36 Local Control Panel	Rev#:	3	By:	T.R.	Rev. Date:	May 26, 2000

ITEM	DEVICE	DESCRIPTION	PART NUMBER/TYPE	QTY.	MFG/ SUPPLIER	REMARKS
17		Momentary illuminated pushbutton, 922 series, with White lens	922-1524-525 + 908-1635	1	DIALIGHT	
		White LED @24VDC , type T-1 ¾ midget flange based	FF200CW600-24V-P	1	LEDTRONICS	
18		Momentary non-illuminated pushbutton, 922 series, with White lens	922-1524-525 + 908-1635	2	DIALIGHT	
19		Push/pull turn switch with knob	MNR4404Z5P1 + 44B12DY	3	ENTECH	
20		2 Position toggle switch, ON-OFF, 2P.S.T.	7560K5	2	CUTLER-HAMMER	
		4/ Wiring Accessories				
21		Terminal blocks and accessory	SAK2.5EN, 4EN	Lot	WEIDMULLER	
22		Connecting wires	Tefzel	Lot	TEXCAN	
23		36 Way M-Series Plug Connector (Rack Side), made of the following items;	-	-	AMP	
		Phenolic block plug	205076-2	3		
		Type III pin	66103-4	108		
		Fixed jackscrew male	200874-1	3		
		Fixed jackscrew female	200875-1	3		
		Corner guide pin	200833-2	7		
		Corner guide socket	200835-2	5		
24		Miniature Rectangular Connectors (6 circuits), made of the following items;	-	-	AMP	To be used with BOM items 14 to 18
		Pin housing	1-640510-0	12		
		Pin	640545-1	48		
		Socket housing	1-640520-0	12		
		Socket	641300-1	48		
		End Of Items				

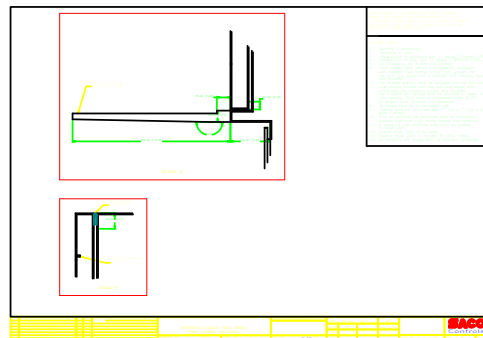
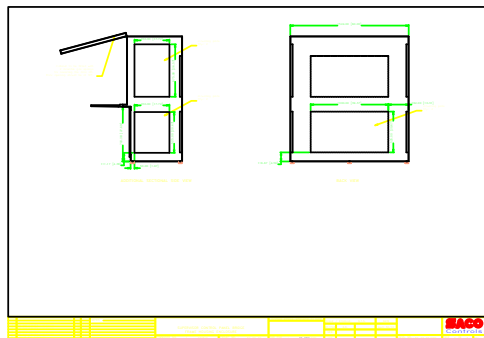
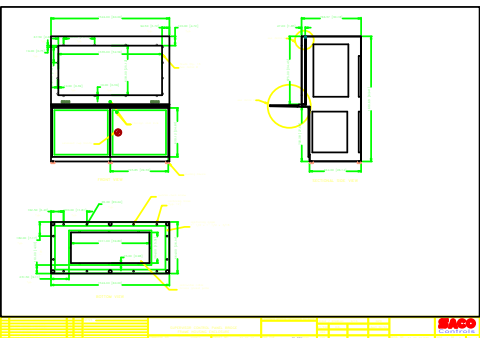


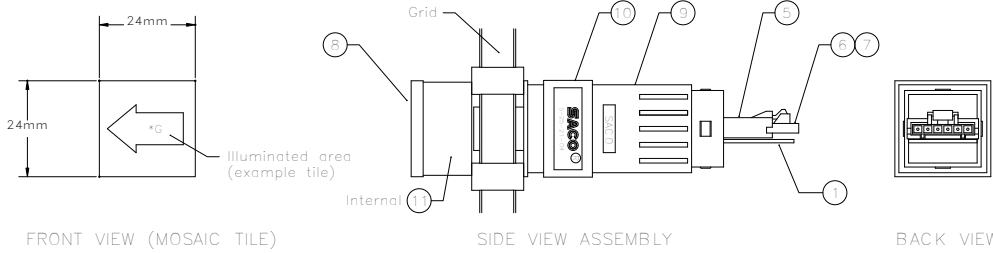
GENERAL MISC. LAYOUT

1-16 (16) 1-17 (17) 1-18 (18) 1-19 (19) 1-20 (20) 1-21 (21) 1-22 (22) 1-23 (23) 1-24 (24) 1-25 (25) 1-26 (26) 1-27 (27) 1-28 (28) 1-29 (29) 1-30 (30)

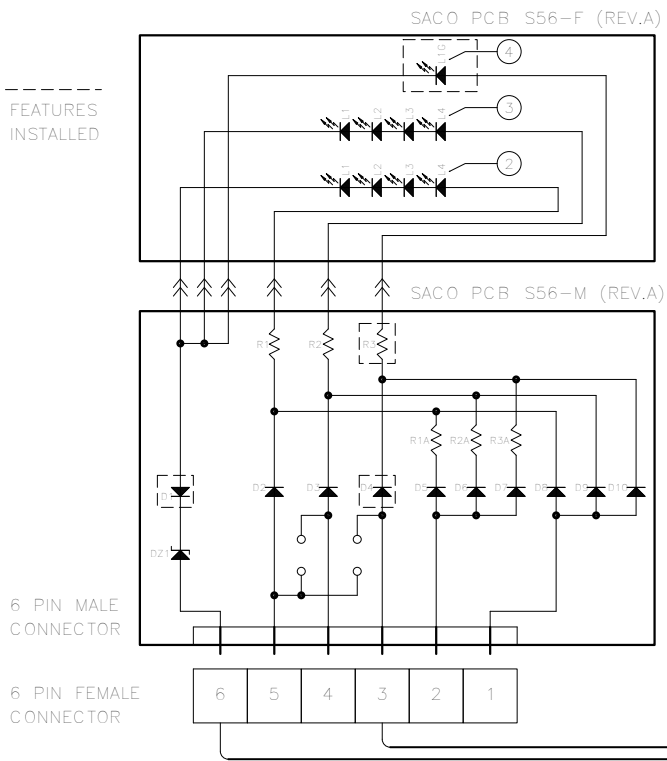
1-1 (1) 1-2 (2) 1-3 (3) 1-4 (4) 1-5 (5) 1-6 (6) 1-7 (7) 1-8 (8) 1-9 (9) 1-10 (10) 1-11 (11) 1-12 (12) 1-13 (13) 1-14 (14) 1-15 (15) 1-16 (16) 1-17 (17) 1-18 (18) 1-19 (19) 1-20 (20) 1-21 (21) 1-22 (22) 1-23 (23) 1-24 (24) 1-25 (25) 1-26 (26) 1-27 (27) 1-28 (28) 1-29 (29) 1-30 (30)

1-1 (1) 1-2 (2) 1-3 (3) 1-4 (4) 1-5 (5) 1-6 (6) 1-7 (7) 1-8 (8) 1-9 (9) 1-10 (10) 1-11 (11) 1-12 (12) 1-13 (13) 1-14 (14) 1-15 (15) 1-16 (16) 1-17 (17) 1-18 (18) 1-19 (19) 1-20 (20) 1-21 (21) 1-22 (22) 1-23 (23) 1-24 (24) 1-25 (25) 1-26 (26) 1-27 (27) 1-28 (28) 1-29 (29) 1-30 (30)





REQ'D		BILL OF MATERIALS	
QTY	ITEM	PART NO.	DESCRIPTION
1	01	S56-M	MAIN PCB
-	02	-	NOT INSTALLED
1	03	GREEN LED	GREEN LED
-	04	-	NOT INSTALLED
1	05	SC-6M	6-PIN MALE CONNECTOR
1	06	SC-6F	6-PIN FEMALE CONNECTOR
2	07	SCR-01	CONNECTOR RECEPTACLES
1	08	SH-2424GR	24X24mm GRAY MOSAIC TILE
1	09	SH-2424-01	INDICATOR HOUSING
1	10	SHC-01	HOUSING CLIP
1	11	S56-F	INTERNAL FACE PCB

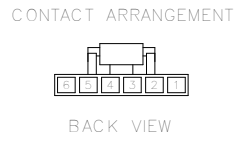


ASSEMBLY

ILLUMINATION	SUPERBRIGHT BACKLIT LED
OPERATING VOLTAGE	24VDC
POLARITY	COMMON CATHODE
LAMP TEST	NO
CURRENT CONSUMPTION	20mA PER LED COLOR

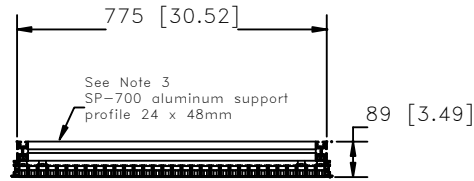
PIN ASSIGNMENT

PIN NO.	PCB NAME	SIGNAL	WIRE COLOR
1	L1	NOT INSTALLED	N/A
2	L4	NOT INSTALLED	N/A
3	L3	GREEN	BLACK
4	L2	NOT INSTALLED	N/A
5	L1	NOT INSTALLED	N/A
6	COM	COMMON CATHODE	BLACK



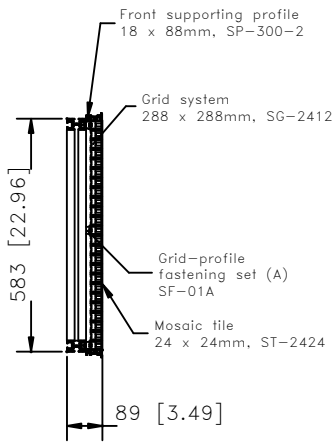
NOTES	CUSTOMER APPROVAL/APPROBATION BY CLIENT	SCALE / ECHELLE:	N.T.S.	DATE	
PLEASE USE THE ABOVE SACO DRAWING AS A REFERENCE WITH ALL OTHER PERTINENT SACO MOSAIC, WIRING, AND BILL OF MATERIAL DOCUMENTS.		BY/PAR	Sam Larizza	JUNE 21/00	
		VER.			
		APP.			
SE900-01-2424-1C-G-024-CC-NT-TB					
COMMANDE NO. : T99802T3	PROJET NO. : P1-00-10	CAD FILL FICHER CAD : MN-G.DWG		DESS. NO. : P1-00-10/G	PAGE 1 DE 1
PURCHASE ORDER NO. :	PROJECT NO. :			DRWG. NO. :	SHEET 1 OF 1



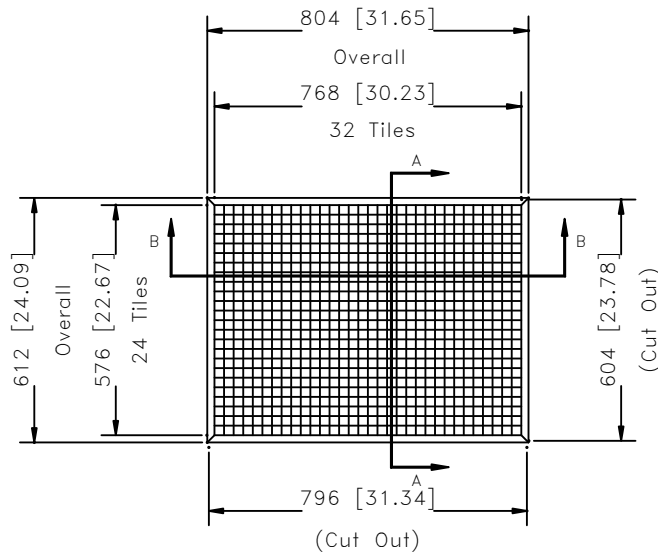


SECTION BB

MOSAIC PANEL REFERENCE:	POSITION OF REAR PROFILE(S)
CP10 LOCAL CONTROL PANEL	COLUMN #X (T.B.A.)
CP11 LOCAL CONTROL PANEL	COLUMN #X (T.B.A.)
CP33 LOCAL CONTROL PANEL	COLUMN #X (T.B.A.)
CP34 LOCAL CONTROL PANEL	COLUMN #X (T.B.A.)
CP35 LOCAL CONTROL PANEL	COLUMN #X (T.B.A.)
CP36 LOCAL CONTROL PANEL	COLUMN #X (T.B.A.)
CP40 LOCAL CONTROL PANEL	COLUMN #13
CP58 LOCAL CONTROL PANEL	COLUMN #X (T.B.A.)
CP61 LOCAL CONTROL PANEL	COLUMN #X (T.B.A.)
CP72 LOCAL CONTROL PANEL	COLUMN #X (T.B.A.)
CP75 LOCAL CONTROL PANEL	COLUMN #X (T.B.A.)
CP124 LOCAL CONTROL PANEL	COLUMN #X (T.B.A.)
CP152 LOCAL CONTROL PANEL	COLUMN #X (T.B.A.)



SECTION AA



FRONT VIEW

NO.	REVISIONS	REV.	DATE

NOTES
 1- All dimensions are in mm [inches].
 2- Quantity: 13 panels
 3- SP700 profiles added behind grid for rigidity purposes, see table for placement.

SP-300-2 FRAMEWORK STRUCTURE DETAIL			
COMMAND NO.:	T99802TJ	PROJECT NO.:	P1-00-10
PURCHASE ORDER NO.:		PROJECT NO.:	

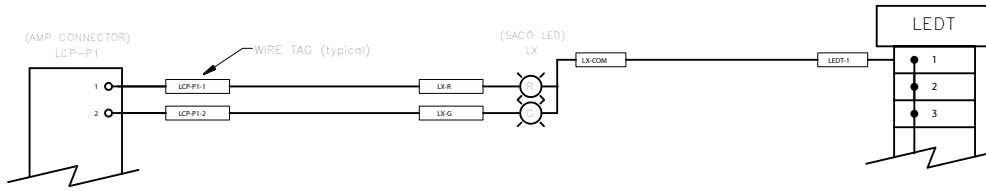
CUSTOMER APPROVAL / APPROBATION DU CLIENT	SCALE / ECHELLE:	NTS	DATE
	BY/PAR Sam Larizza		FEB. 10/00
	VER.		
	APP.		

DESIGN NO.:	P1-00-10/FW1
DRAWING NO.:	

PAGE	1	OF	1	REV.:	0
SHEET	1	OF	1		



TYPICAL WIRE TAGGING



NOTES: 1- CONNECTION IDENTIFICATION: 2- WIRE TYPE AND COLOR: 3- WIRE TERMINATION AND MARKING:



NOTES		CUSTOMER APPROVAL / APPROBATION DU CLIENT		SCALE / ECHELLE:		DATE	
				BY/PAR: Franco Fusco		MAY 5/00	
				VER:			
				APP:			
SUPPLEMENTARY WIRING DIAGRAM COMMANDE NO.: PURCHASE ORDER NO.: T9980213		PROJECT NO.: P1-00-10 PROJECT NO.:		CAD FILE: MN-CWL.dwg FICHER CAD:		DESS. NO.: P1-00-10/CWL DRWG. NO.:	
ISSUED FOR APPROVAL NO. REVISIONS		EFF. DATE		PAGE 1 OF 1		SHEET 1 OF 1	

